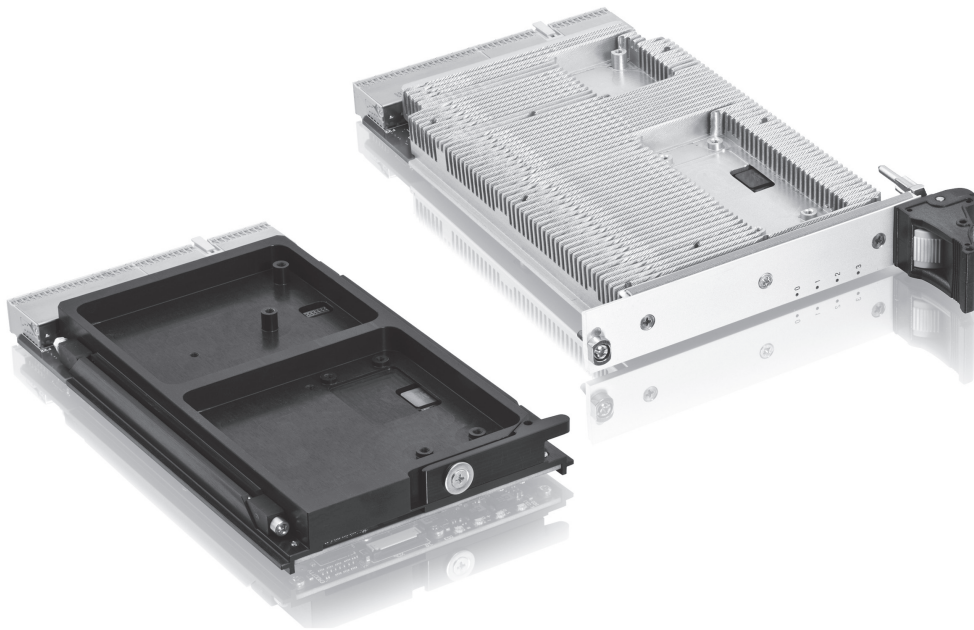


# » CP3002-RC/-RA «



## 3U CompactPCI® conductive-cooled / air-cooled Core™ i7 CPU board

### » **Highest Performance**

Core™ i7-620LE 2.0 GHz, up to 8GB soldered DDR3 memory

### » **Rugged Design**

VITA 47 compliant

### » **Broad Rear I/O Connectivity**

Gigabit Ethernet, USB, SATA, Serial ports ...

Designed to withstand even the toughest environmental conditions, the CP3002-RC/-RA is VITA 47 compliant against temperature and shock and vibration requirements. Furthermore, selected components with high temperature tolerance from embedded technology programs have been chosen to guarantee operability.

Investing in a new project is always a challenge and risky. Extending the lifetime of an application to the maximum possible is therefore a critical issue in recuperating the development investment. Delivering a stable product based on Intel®'s embedded product line, the CP3002-RC/-RA ensures long-term availability. This reduces the risk of unplanned design changes and unexpected expensive application modifications. While minimizing deployment risks by providing a broad range of software support, the CP3002-RC/-RA eases the process of product integration and maximizes your competitive advantage to meet your time-to-market window.



## Technical Information

## Processor

Intel® Core™ i7 processor (32nm manufacturing process):  
 » Core i7-620LE: 2.0 GHz, LV, 4MB L3 cache (shared instruction/data cache between both cores)

Please contact Kontron for further information concerning the suitability of other Intel® processors for use with the CP3002-RC/-RA

## Memory

System Memory

Up to 8 GB DDR3 SDRAM running at 1066 MHz, soldered, with ECC

Boot Flash (uEFI)

Two redundant 8 MB SPI Flashes, with fail-over functionality

EEPROM

Serial EEPROM (24LC64) 64 Kbit for storing uEFI BIOS settings and serial number

SATA NAND Flash

Up to 32 GB SLC NAND Flash on a dedicated SATA Flash module

## Onboard Controller

Platform Controller Hub

Mobile Intel® QM57 Express Chipset:  
 » SATA host controller with six ports with RAID 0/1/5/10 support  
 (only 3x ports are used, thus only RAID 0/1/5 support is available)  
 » USB 2.0 host interface with up to 14 ports (only 2x ports are used)  
 » 2x PCI Express x4 or 8x PCI Express x1 2.0 ports (only 1x PCI Express® x4 is used)

VGA

High performance 3D graphics controller integrated in the processor:  
 » Supports analog display resolutions up to 2048 x 1536 pixels @ 75Hz  
 » Dynamic Video Memory Technology (DVMT), up to 352 MB

Gigabit Ethernet

» 4x GbE, without onboard magnetics  
 » Intel® 82580EB Quad Gigabit Ethernet controller  
 » Basic WOL (Wake-On-LAN), w/o power off capability

UART

XR16L2750IM-F, dual UART, 16C550-compatible

Watchdog

FPGA-based, timeout ranging from 125ms to 4096s programmable in 16 steps, IRQ, Reset, dual-stage

RTC

Integrated in QM57 with 256 Byte CMOS RAM

Trusted Platform Module (TPM)

Atmel AT97SC3204 TPM 1.2 controller

## Front Interfaces (CP3002-RA only)

LEDs

LED 0,1,2,3: POST Code or General Purpose or WD, TH

## Onboard Interfaces

I/O Extension Connector

The I/O extension connector holds 1x SATA port for the SATA Flash module

## Rear I/O via J2

The CP3002-RC/-RA supports:  
 » Two SATA II ports  
 » Four Gigabit Ethernet ports without onboard magnetics  
 » Two USB 2.0 ports with power  
 » One VGA analog port  
 » One COM port RS-232  
 » One COM port RS-232/RS-422  
 » Five GPIs and Three GPOs (LVTTL signalling)  
 » Back-up voltage (3.3V)

## CompactPCI® Bus Interface

» PICMG 2.0 Rev. 3.0 compatible, 32-bit, 33/66MHz system master  
 » Universal 5V and 3.3V PCI signalling voltage supported, 4 Req/Gnt & clock lines

## Supervisory Functions

Watchdog, software configurable, 125ms to 4096s in 16 steps, generates IRQ or hardware reset, dual-stage configuration

## Compliance

CompactPCI® Core Specification PICMG 2.0 Rev. 3.0  
 ANSI/VITA47-2005:  
 CP3002-RC ECC4  
 CP3002-RA EAC6

Designed to meet or exceed:  
 » Safety: UL 60950-1, CSA 22.2 No 60950-1, EN60950-1  
 » EMI/EMC: EN 55022 / EN 55024, EN 61000-6-3 / EN 61000-6-2

## General

Dimensions

100 x 160 mm, 3U, 4HP

Weight

CP3002-RC: 360 g  
 CP3002-RA: 420 g

MTBF

CP3002-RC: 261,450 h acc. to MIL-HDBK-217 FN2, Ground Benign, controlled at 30°  
 CP3002-RA: 234,213 h acc. to MIL-HDBK-217 FN2, Ground Benign, controlled at 30°

## Software Support

» AMI uEFI, setup console redirection to serial port (VT100 mode) with CMOS setup access, EFI Shell support, Board configuration via Shell, diskless, keyboardless, videoless operation  
 » LAN boot support  
 » Board identification number accessible via EEPROM  
 » Support for Windows® XP, Windows® 7, Windows® Embedded Standard 7, Windows® Server 2003, Windows® Server 2008, Linux, WindRiver Linux, VxWorks®, QNX®  
 (Other OSs may also be used with the CP3002-RC/-RA. Please contact Kontron for further information.)

## Power Consumption

Typ. 31W

## Environmental

Operating Temp.

-40°C to +85°C, CP3002-RC  
 -40°C to +75°C, CP3002-RA

Storage Temperature

-55°C to +85°C (without additional components)

Climatic Humidity

93% RH at 40°C, non-condensing (acc. to IEC 60068-2-78)

## Ordering Information

## Article

## CPU Configuration

CP3002-RC-2.0D-4-4R-S16-C-T

CP3002-RC-2.0D-8-4R-S32-C-T

CP3002-RA-2.0D-4-4R-S16-T

CP3002-RA-2.0D-8-4R-S32-T

## Rear Transition Module

CP-RI03-05

## Evaluation System

CP-ASM4R-44F-M180AC-B0500-STD-TT

## Software

VXW-BSP-CP3002(-RC/-RA)-V6.9.1

## Description

Rugged conduction-cooled, Intel® Core™ i7-620LE, 2.0 GHz, 4MB L3, 4GB soldered DDR3, 16GB Flash, with conformal coating, with TPM

Rugged conduction-cooled, Intel® Core™ i7-620LE, 2.0 GHz, 4MB L3, 8GB soldered DDR3, 32GB Flash, with conformal coating, with TPM

Rugged air-cooled, Intel® Core™ i7-620LE, 2.0 GHz, 4MB L3, 4GB soldered DDR3, 16GB Flash, with TPM

Rugged air-cooled, Intel® Core™ i7-620LE, 2.0 GHz, 4MB L3, 8GB soldered DDR3, 32GB Flash, with TPM

8HP rear I/O module (4x GbE, 2x USB, VGA, 2x SATA, 2x COM, GPIO)

44HP/4U Evaluation System, integrated 5-slot Backplane, 180W AC PSU, Fans, rear I/O enabled, for use with CP3002-RA and Rear Transition Module

VxWorks 6.9.1 Board Support Package



Evaluation System

## CORPORATE OFFICES

## Europe, Middle East &amp; Africa

Oskar-von-Miller-Str. 1  
85386 Eching / Munich  
Germany

Tel.: +49 8165 77 777  
Fax: +49 8165 77 219  
info@kontron.com

## North America

14118 Stowe Drive  
Poway, CA 92064-7147  
USA

Tel.: +1 888 294 4558  
Fax: +1 858 677 0898  
info@us.kontron.com

## Asia Pacific

17 Building, Block #1, ABP.  
188 Southern West 4th Ring Road  
Beijing 100070, P.R.China

Tel.: +86 10 63751188  
Fax: +86 10 83682438  
info@kontron.cn